

Welcome TO BAVARIA

EXHIBITOR LIST
SMART CITY EXPO
WORLD CONGRESS 2022

Barcelona | Spain
Hall 2 | Stand A129 & B131



THE BAVARIAN PAVILION IS PROUDLY PRESENTED BY



Bavarian Ministry of Economic Affairs,
Regional Development and Energy

BAVARIAN MINISTRY OF ECONOMIC AFFAIRS, REGIONAL DEVELOPMENT AND ENERGY

Prinzregentenstrasse 28
80538 Munich
Germany

Tel.: +49 89 21620
info@stmwi.bayern.de
www.stmwi.bayern.de



BAYERN INTERNATIONAL – BAVARIAN BUREAU FOR INTERNATIONAL BUSINESS RELATIONS

Rosenheimer Str. 143c
81671 Munich
Germany
Tel.: +49 89 6605660
info@bayern-international.de
www.bayern-international.de

BAVARIA

THE COUNTRY PAVILION OF THE FREE STATE OF BAVARIA IN GERMANY

More than 30 exhibitors from BAVARIA will display their latest products, services and solutions for Smart Cities worldwide.

Get in touch with innovative companies, cluster, cities & regions.



ARIADNE MAPS

Brecherspitzstr. 8
81541 Munich
Germany

Tel.: +49 174 4079675
contact@ariadnemaps.com
www.ariadnemaps.com

COMPANY PROFILE

Ariadne is the operating system of commercial real estates that provides advanced, real-time customer analytics enabled with award winning accuracy and certified privacy compliance. Track your customer journey with Ariadne's low-cost, plug-and-play solution – no app, no network connection, no cameras, yet fully anonymous and over 95% accurate!

Stand B131/7



ATENE KOM GMBH

Rosenheimer Str. 141 H
81671 Munich
Germany

Invalidenstrasse 91
10115 Berlin
Germany

Tel.: +49 30 22183-0
info@atenekom.eu
www.atenekom.eu

COMPANY PROFILE

atene KOM GmbH is a partner for the public sector. We accompany municipalities, counties and companies in the development and implementation of projects in the areas of digitalisation, energy, mobility and education. Our business locations in Europe and Germany enable us to meet the region-specific needs of our clients throughout Europe.

Stand A129/10



BAYERN INNOVATIV

Bayerische Gesellschaft für Innovation
und Wissenstransfer mbH
Lichtenbergstraße 8
85748 Garching
Germany

Tel.: +49 911 20671-726
Fax: +49 911 20671-792
info@bayern-innovativ.de
www.bayern-innovativ.de

COMPANY PROFILE

Bayern Innovativ fosters innovation by facilitating cooperation and knowledge transfer between all stakeholders from the mobility ecosystem across Bavaria - and beyond. We provide funding schemes as well as platforms for experts to meet, exchange ideas and jointly work on innovative solutions for the future of mobility.

Stand B131/4



BAYERN INNOVATIV

Bayerische Gesellschaft für Innovation
und Wissenstransfer mbH
Lichtenbergstraße 8
85748 Garching
Germany

Tel.: +49 911 20671-0
smartcity@bayern-innovativ.de
smart-regions.bayern

COMPANY PROFILE

The Smart Cities and Regions Bavaria Network focuses on strategy development and creating actions for data integration in municipalities, counties and regions. The network is open to all interested in Smart Cities and Regions topics and projects. Join us!

Stand B131/4



THINKNET 6G

Am Tullnaupark 8
90402 Nuernberg
Germany

Tel.: +49 911 20671-219
thinknet-6g@bayern-innovativ.de
www.bayern-innovativ.de

COMPANY PROFILE

To ensure that all relevant stakeholders in Bavaria are involved in the research and development of 6G early in this cycle, the Bavarian Ministry of Economic Affairs founded Thinknet 6G to create an agile ecosystem of industry players, research institutions, associations, innovators, start-ups and incubators. Thinknet 6G is both a think tank and an agile community for all organisations and stakeholders who are interested in any aspect of 6G development.

Stand B131/4



BAVARIAN SMART CITIES & REGIONS

organized by City of Regensburg |
Smart City

Bruderwöhrdstraße 15 b
93055 Regensburg
Germany

Tel.: +49 941 507-1061
Fax: +49 941 507-4859
R_NEXT@regensburg.de

COMPANY PROFILE

Smart cities and smart regions use the opportunities offered by information and networking technologies in the interests of sustainable and integrated urban development. Many Bavarian cities and regions have already set out to become smart. Our goal is always to improve the quality of life for citizens and to increase the opportunities for participation and co-design for each individual. We must meet our very individual challenges with the opportunities offered by innovative technologies and solutions and often develop new approaches to solutions in co-creative processes. [Stand B131/1](#)

BearingPoint®

BEARINGPOINT GMBH

Erika-Mann-Strasse 9
80636 Munich
Germany

Tel.: +49 89 540 33 0
Fax: +49 89 540 33 79 00
germany@bearingpoint.com
www.bearingpoint.com

COMPANY PROFILE

BearingPoint is an independent management and technology consultancy, with European roots and a global reach. We support world-leading businesses in over 75 countries, through our business units: Consulting, Business Services, and Software Solutions.

We help clients in Transportation and Automotive to develop tomorrow's sustainable mobility.

Stand A129/11

Blickfeld

LiDAR / scan your world

BLICKFELD GMBH

Barthstraße 12
80339 Munich
Germany

Tel.: +49 89 2306935 00
info@blickfeld.com
www.blickfeld.com

COMPANY PROFILE

Blickfeld was founded in 2017 in Munich with the goal to build a high performant and mass producible LiDAR sensor. The company achieved this by reinventing one of the core components of the 3D sensors as well as rethinking the setup of the device. The result is a performant, small and reliable LiDAR sensor, that, in combination with Blickfeld's perception software, enables countless mobility, smart city, industrial and security applications.

Stand B131/12



BÜHNENPOLKA

Pickelstr. 6
80637 Munich
Germany

Tel.: +49 89 203 543 37
info@buehnenpolka.de
www.buehnenpolka.de

COMPANY PROFILE

Buehnenpolka is a Munich based collective. We combine comedic elements with your company's key values resulting in a personalized performance that resonates with your costumers and staff.

Theatrical tools are key for simulation, providing usability experiences to release your crew's inner creativity. With Improvisation we aim to further accelerate Innovation.

Stand A129/6



CIP GROUP CIP MOBILITY GMBH

Oberanger 32
80333 Munich
Germany

Tel.: +49 89 724019-0
contact@mocci.com
www.mocci.com

COMPANY PROFILE

mocci is a brand of CIP Mobility GmbH that considers the topic of mobility holistically and in the context of the connected and digital city of the future. In its Smart Pedal Vehicles (SPV), mocci combines the aspects of digitalization, environment, urbanization, and human well-being. The eBikes are an innovative, individual, and sustainable solution for companies wanting to operate flexibly, quickly and in a sustainable way in urban spaces.

Stand B131/6



CLEVERCITI

Hofmannstr. 54
81379 Munich
Germany

8000 Avalon Blvd. Suite 100
Alpharetta, GA 30009
USA

Tel.: +49 89 78576736-23
www.cleverciti.com

COMPANY PROFILE

Smart Parking for Smart Cities: Reducing Vehicle Minutes Traveled.
Cleverciti solves parking search by seamlessly guiding drivers to the most convenient available space, reducing search traffic and vehicle emissions while growing parking revenue and the local economy.

Stand B131/13



CLUSTER MOBILITY & LOGISTICS, EUROPEAN MOBILITY PROJECT RECIPROCITY, C/O R-TECH GMBH

Franz-Mayer-Str. 1
93053 Regensburg
Germany

Tel.: +49 941 604889 0
info@mobilitylogistics.de
www.mobilitylogistics.de

COMPANY PROFILE

The Cluster Mobility & Logistics is leading the European mobility project RECIPROCITY. The name of the project stands for „Replication of innovative concepts for peri-urban, rural or inner-city mobility“. The aim of the project is to identify innovative mobility concepts for rural, peri-urban and inner-city areas and to replicate them elsewhere. The cluster manages the activities of the consortium of ten partners from all over Europe.

Stand B131/2



CO-EXHIBITOR – CIP GROUP

DOMETIC GERMANY HOLDING GMBH

Hollefeldstraße 63
48282 Emsdetten
Germany

Tel.: +49 2572 879 159
professional@dometic.com
www.dometic.com/delibox

COMPANY PROFILE

Bring your food delivery business to a new level with innovative transport solutions from Dometic. From temperature-controlled food delivery boxes with active warming and cooling technology to practical soft coolers – our products help you to win loyal customers and boost your revenues in this fast growing market segment.

Stand B131/6



FUJITSU

Mies-van-der-Rohe-Straße 8
80807 Munich
Germany

Tel.: +49 89 62060 0
cic@ts.fujitsu.com
www.fujitsu.com

COMPANY PROFILE

Fujitsu is a leading information & telecommunications provider that supports its customers in all aspects of digital transformation. Fujitsu combines IT services & products with future-oriented digital technologies and creates new values together with customers & partners. In Germany, Austria & Switzerland, Fujitsu has approx. 5000 employees & over 10000 channel partners.

Stand A129/1



GBCI

Steinsdorfstrasse 8
80538 Munich
Germany

Tel.: +49 89 4111 5077
kkillmann@gbci.org
www.gbci.org

COMPANY PROFILE

GBCI is the global verification body recognizing excellence in the green business industry performance through its exclusive administration of sustainability benchmark systems, such as LEED, WELL and others.

GBCI Europe is a regional hub serving the needs of the European green building community by providing on-the-ground customer support for project teams and stakeholders.

Stand A129/8



HAWA DAWA GMBH

Gotzinger Str. 8
81371 Munich
Germany

Tel.: +49 151 6453 2498
marketing@hawadawa.com
www.hawadawa.com

COMPANY PROFILE

Our solution offers ubiquitous real-time air quality monitoring and contextualised insights and analytics with a high spatial and temporal resolution at proven quality traceable to accepted standards.

Entire cities can thus be covered in a commercially viable way.

We make cities data-wise and support them to become more sustainable, healthy and attractive.

Stand A129/7



INYO MOBILITY GMBH

Am Schammacher Feld 37
85567 Grafing
Germany

info@inyo-mobility.com
www.inyo-mobility.com

COMPANY PROFILE

INYO realizes customized lightweight vehicles that can be operated automatically. From design to operation, the vehicle is accompanied by a digital twin, which allows for a fast realization of customized vehicle concepts. Based on this approach, the INYO CAB, a 2 to 4-seater lightweight shuttle, is currently being developed.

Stand B131/11



LIANGDAO GMBH

Head Office:
Rosa-Bavarese-Str.3
80639 Munich, Germany

R&D Office:
Germaniastr. 18-20
Stairway C., 2nd Floor
12099 Berlin, Germany

www.liangdao.de

COMPANY PROFILE

LiangDao is a global leading system provider of LiDAR sensors, providing industry customers with a full stack of LiDAR sensing systems, including automotive-grade LiDAR hardware, perception software, testing, validation and data services. As an Innovator Top 100 company in Germany, LiangDao is dedicated to applying LiDAR systems to a wide range of applications in smart city and automotive.

Stand B131/16



City of Munich

CITY OF MUNICH

Department of Communal Services
GeodataService
Denisstr. 2, 80335 Munich, Germany
Tel.: +49 89 233 25969
digital.twin@muenchen.de

Department of Labor and Economic
Development
Herzog-Wilhelm-Str. 2, 80331 Munich,
Germany
Tel.: +49 89 233 30196
europa@muenchen.de

PROFILE

Munich is the third largest town in Germany. The City of Munich municipality has over 30,000 employees. In 2019, the Munich city council agreed on the political priority to make the Bavarian capital climate neutral until 2035. So Munich is a partner in many EU funded projects and actively seeking to cooperate with other cities on central future and smart topics.

Stand B131/5



MUNICH METROPOLITAN REGION

MUNICH METROPOLITAN REGION

EMM e.V. Head Office
Kardinal-Döpfner-Str. 8
80333 Munich
Germany
Tel.: +49 89 452 056-010
info@metropolregion-muenchen.eu
www.metropolregion-muenchen.eu

PROFILE

The Munich Metropolitan Region is much more than just one of the most successful economic areas in Europe. In order to further strengthen this attractiveness, districts and cities are working together with industry, science and society in the association European Metropolitan Region Munich (EMM e.V.) and provides the platform for overarching topics, initiates targeted dialogues and organizes joint supraregional performances.

Stand B131/10



BAU 2023

April 17–22 · Munich

MESSE MÜNCHEN GMBH

Messegelände
81823 Munich
Germany

Tel.: +49 89 949 11308
info@bau-muenchen.com
bau-muenchen.com

COMPANY PROFILE

BAU is the world's leading trade fair for architecture, materials and systems, the largest and most important event for the Industry.

Further information: bau-muenchen.com

Stand B131/9

digital

BAU 

conference & exhibition

July 4–6, 2023 · Messe München
digital-bau.com

MESSE MÜNCHEN GMBH

Messegelände
81823 Munich
Germany

Tel.: +49 89 949 11308
projektleitung@digital-bau.com
www.digital-bau.com

COMPANY PROFILE

Trade Fair for Digital Solutions in the Construction industry.

Further information: digital-bau.com

Stand B131/9



BAUZENTRUM POING

Bavaria's Largest Homes Exhibition
bauzentrum-poing.de

BAUZENTRUM POING

Senator-Gerauer-Str. 25
85586 Poing / Grub
Germany

Tel.: +49 89 949 11638
info@bauzentrum-poing.de
bauzentrum-poing.de

COMPANY PROFILE

Living with Innovations Bauzentrum Poing near Munich is Bavaria's largest homes exhibition. Discover the variety of architecture, innovation and living atmosphere in around 60 model directly on site.

Further information: bauzentrum-poing.de

Stand B131/9



MOBIWORX TELEMATIK GMBH

Rosenheimer Straße 44
83064 Raubling
Germany

Tel.: +49 8035 96463-0
Fax: +49 8035 96463-29
info@mobiworx.de
www.mobiworx.de

COMPANY PROFILE

MOBIWORX develops, produces, distributes and services webbased telematics system solutions for the digital transformation and optimization of Businessprocesses. Our clients mainly include public administrations and smart Cities. With our solutions data recording is automated and a digital Transformation of business processes becomes standard.

Stand A129/5



PERPETUUM PROGRESS

Schloßlande 26
85049 Ingolstadt
Germany

info@pepro.io
www.perpetuum-progress.io

COMPANY PROFILE

Perpetuum Progress is simulation engineering partner in serial development for OEMs and First-Tiers. Also in research projects we develop innovative solutions on the way to autonomous mobility.

This combined experience enables us to create our own innovative platform as a service: Open Validation Plattform (OVAL).

OVAL is a data exchange platform of digital assets for virtual validation.

Stand A129/4



PricewaterhouseCoopers GmbH WPG (PwC)

Bernhard-Wicki-Straße 8
80636 Munich
Germany

Tel.: +49 89 5790-50
Fax: +49 89 5790-5999
www.pwc.de

COMPANY PROFILE

As a company with 12,000 employees, PwC is not only the leading auditing and consulting firm in Germany, but also a technology innovator and software provider. In line with PwC's motto 'solve important problems', we are committed to solving major societal issues with the help of artificial intelligence and mobile technology. We are pushing the mobility revolution, designing solutions for modern and livable cities.

Stand B131/8



CO-EXHIBITOR – PwC

SWARM ANALYTICS GMBH

Helga-Krismer-Platz 1
6020 Innsbruck
Austria

Tel.: +43 664 4678233
office@swarm-analytics.com
www.swarm-analytics.com

COMPANY PROFILE

At Swarm Analytics, we want to help shape the Smart City of tomorrow! We believe that Artificial Intelligence plays a major role in this and are convinced that new technologies can improve the quality of life for all of us – without sacrificing privacy, individual movement data and personal freedom.

Stand B131/8



SMART DATA SERVICES

Hansastraße 12-16
80686 Munich

Kolbermoorer Str. 36
83026 Rosenheim
Germany

Tel.: +49 162 2035800
info@roo.si
www.roo.si

COMPANY PROFILE

Behind Smart Data Services are companies like roosi GmbH with decades of experience and expertise in the municipal environment and in dealing with structured and unstructured data. We help our customers achieve holistic real-time capability and better decision-making. Our business is characterized by trust, fair business and open communication.

Stand A129/2



S+S REGELTECHNIK

S+S REGELTECHNIK

Thurn-und-Taxis-Str. 22
90411 Nuernberg
Germany

Tel.: +49 911 519470
mail@SplusS.de
www.SplusS.de

COMPANY PROFILE

Innovative sensor technology (temperature, humidity, pressure, air quality, light intensity, etc.) and field devices for measurement and control tasks in facility engineering – Quality “Made in Germany”!

Stand B131/15



SAVENOW

Research Cooperation SAVeNoW
coordinated by AUDI AG
MX452
Schollstraße 8
85055 Ingolstadt
Germany

Tel.: +49 841 89-33574
gerhard.stanzl@audi.de

COMPANY PROFILE

SAVeNoW creates an operable and transferable digital twin for urban traffic. Static and dynamic elements are recorded digitally and mapped virtually. Measures (in domains of traffic efficiency safety and ecology) are applied by simulated what-if-scenarios. Dialogue with citizens about automated mobility and use of collected data for digital twin contributes to technology acceptance.

Stand B131/17



5G SYNERGIERWERK

Nymphenburger Str. 39
80335 Munich
Germany

Tel.: +49 89 38197 3000
info@5gsynergiewerk.de
www.5gsynergiewerk.de

COMPANY PROFILE

5G Synergiewerk is a innovative Tower Company with the focus on implementation of 5G Streetlights.

Stand A129/9



URBANISTIC GMBH

MTZ, Agnes-Pockels-Bogen 1
80992 Munich
Germany

www.urbanistic.de

COMPANY PROFILE

urbanistic is developing a SaaS platform that enables urban planners and architects to identify the risks and potentials of their planning variants easily. Intuitive modelling tools, real-time simulations and instant KPI calculations provide them with direct feedback on all decision-relevant parameters.

Stand A129/3



Urban Mobility Innovations

**[UI!] URBAN MOBILITY
INNOVATIONS**

c/o BASE
Blütenstr. 15
80799 Munich
Germany
Tel. +49 89 6931495 40
info@umi.city
www.ui.city

COMPANY PROFILE

[ui!] Urban Mobility Innovations offers to accompany your region on the path of digitalization towards a Smart City / Smart Region. Our data analyses based on floating car data (FCD) provide support to understand and optimize the traffic and parking situation in your city with mobility and parking concepts, as well as initial guidance for the selection of the appropriate technology for digitizing parking.

Stand **B131/3**

Bayern International

Rosenheimer Str. 143C
81671 Munich, Germany
Tel.: +49 89 6605660-0
info@bayern-international.de
www.bayern-international.de
Contact: Sebastian Zettelmeier,
sz@bayern-international.de

Bayern Innovativ

Am Tullnaupark 8
90402 Nuernberg, Germany
Tel.: +49 911 20671-0
info@bayern-innovativ.de
www.bayern-innovativ.de
Contact: Marc Kolbe,
marc.kolbe@bayern-innovativ.de

IHK-Chambers of Commerce and Industry in Bavaria

Max-Joseph-Strasse 2
80333 Munich, Germany
Tel.: +49 89 5116-0
Fax: +49 89 5116-1306
ihkmail@muenchen.ihk.de
www.muenchen.ihk.de
Contact: Hannes Aurbach,
hannes.aurbach@muenchen.ihk.de

INVEST in BAVARIA

Rosenheimer Str. 143C
81671 Munich, Germany
Tel.: +49 89 24210-7500
Fax: +49 89 24210-7557
welcome@invest-in-bavaria.com
www.invest-in-bavaria.com
Contact: Andreas Fischer,
Andreas.Fischer@invest-in-bavaria.de

the fair agency

Theresienstr. 47 b
85399 Hallbergmoos, Germany
Tel.: +49 89 2444 193 75
Fax: +49 89 2444 193 79
info@the-fair-agency.com
www.the-fair-agency.com
Contact: Astrid Sterr,
a.sterr@the-fair-agency.com



YOUR KEY TO BAVARIA

Easy access to economic partners in Bavaria

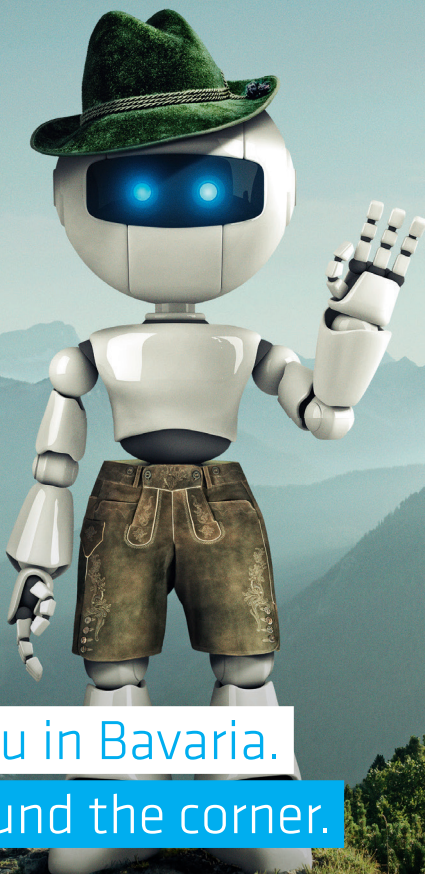
Exclusively available at Bayern International,
the company database »Key to Bavaria«
comes free of charge and offers information on more
than 34.000 entries of companies from all sectors.



Visit www.keytobavaria.com



invest
in
bavaria



See you in Bavaria.

Or around the corner.

Meet us at the booth of BAVARIA

We are looking forward to having a chat about cross-industry innovation and how we can assist you in setting up or expanding business operations in Bavaria. Our services are free and confidential.



- scan me
- follow us on LinkedIn
- get your goodie at the booth

